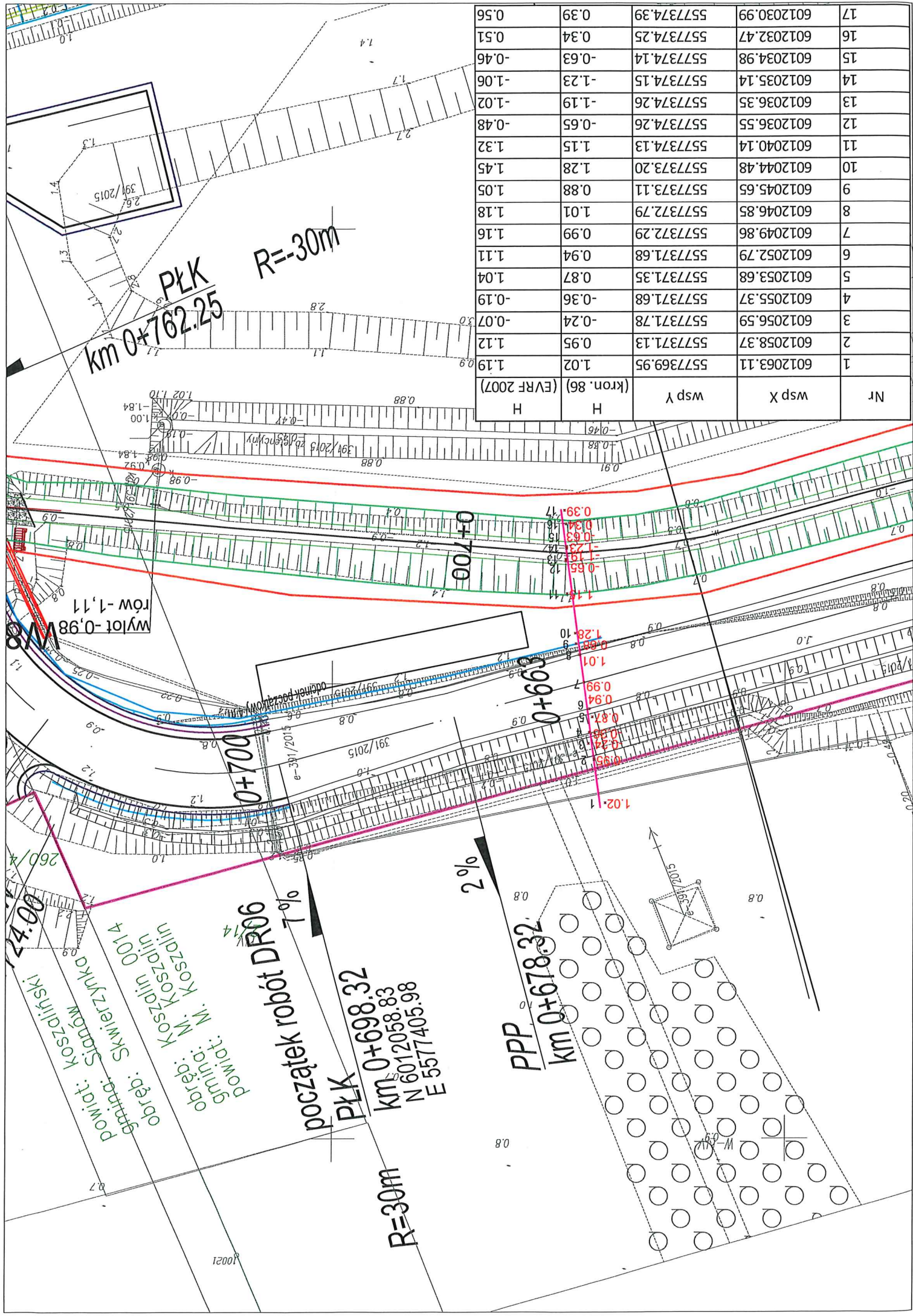
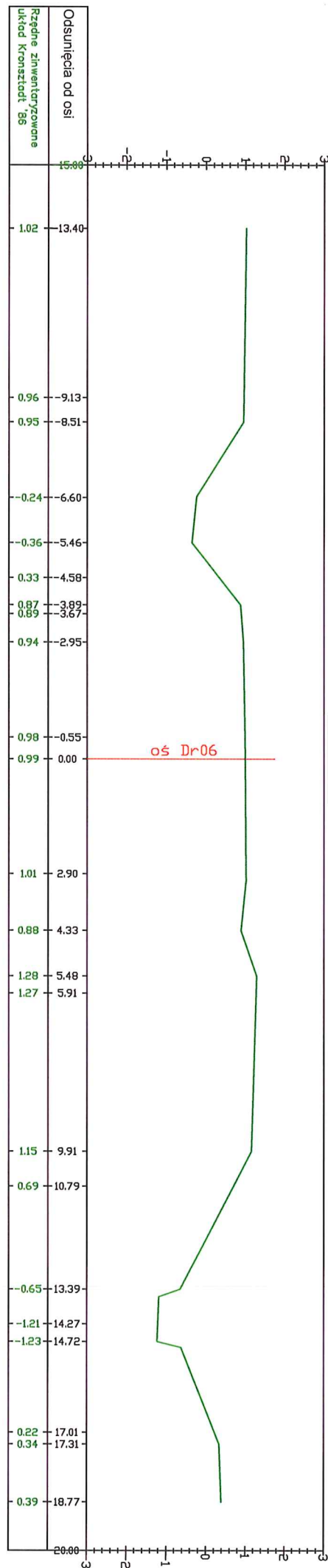


Nr	wsp X	wsp Y	H	H
1	6012063.11	557369.95	1.02	1.19
2	6012058.37	557371.13	0.95	1.12
3	6012056.59	557371.78	-0.24	-0.07
4	6012055.37	557371.68	-0.36	-0.19
5	6012053.68	557371.35	0.87	1.04
6	6012052.79	557371.68	0.94	1.11
7	6012049.86	557372.29	0.99	1.16
8	6012046.85	557372.79	1.01	1.18
9	6012045.65	557373.11	0.88	1.05
10	6012044.48	557373.20	1.28	1.45
11	6012040.14	557374.13	1.15	1.32
12	6012036.55	557374.26	-0.65	-0.48
13	6012036.35	557374.26	-1.19	-1.02
14	6012035.14	557374.15	-1.23	-1.06
15	6012034.98	557374.14	-0.63	-0.46
16	6012032.47	557374.25	0.34	0.51
17	6012030.99	557374.39	0.39	0.56





oś Dr06
0+663.20